

Join the fight for workers' rights

As a LaborLab member, you'll stand shoulder-to-shoulder with a powerful network of unions.

LaborLab

Your \$500 Basic Annual Membership gives you access to:



Early Warning System: Be among the first alerted when companies hire consultants from the union-busting industry, allowing you to mobilize support and protect workers' rights.

Exclusive Webinars & Trainings: Deepen your local's understanding of disclosure laws and equip your union with the tools necessary to fight back against union-busting consultants.



Inside LaborLab Newsletter: Stay informed about the latest developments in our investigations and campaigns, and discover inspiring stories of worker solidarity.

For additional membership benefits, please contact our Executive Director, Bob Funk: funk@laborlab.us

To join: Detach and mail your completed form and \$500 contribution to: **210 E Lyndale Ave, Helena, MT 59601**

On behalf of workers, LaborLab:

Monitors corporate filings in order to alert and assist unions when they're targeted by union-busters

Reports corporate and union-busting industry noncompliance with disclosure laws to the US Department of Labor

Publicizes financial information about the union-busting industry.

Basic Annual Membership Form

Local Union _____

Address _____

City _____

State _____ Zip _____

Point of Contact _____

Name _____

Title _____

Email _____

Phone _____

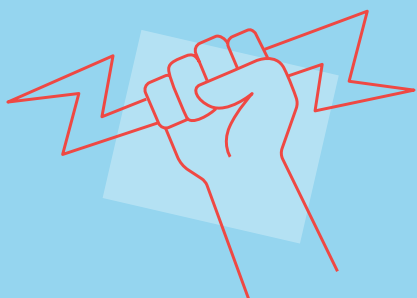
Date _____ Donation Amount \$ _____

*Please mail form and contribution to:
LaborLab, 210 E Lyndale Ave, Helena, MT 59601*

LaborLab is the only organization in the country that alerts and assists unions targeted by the union-busting industry.

In 2023, we exposed over 200 companies for hiring union-busting consultants. By equipping unions with critically important information, reporting illegal activities to the Department of Labor, and garnering widespread media coverage, **we helped secure victories for countless workers nationwide.**

The victories we've secured are just the beginning. **To strengthen our impact and assist even more workers, we need your voice and support.** By joining LaborLab, you become a member of our growing network.



Other LaborLab members include:

IATSE 892, IBT 731, SMART 91, UA 525, BSOIW 7, IBEW 776, UA 23, LIUNA 1686, IATSE 480, LIUNA 335, IUOC 8, IBEW 56, IBEW Local 56, IBEW 158, IBEW 595, IBEW 611, UA 208, IBEW 684, IBEW 617, IUOE 302, IBEW 292, IBEW 617, IBEW 611, SMART, IBT 2, UA 525, IBT 396, BSOIW 86, LIUNA 329, LIUNA 894, Central Labor Council of Humboldt and Del Norte Counties, AFL-CIO, Philadelphia Metal Trades Council, CJA 30, IBEW, Southeast Missouri Central Labor Council, IBT 58, LIUNA 942, UA 23, IBT 570, IBEW Local 617, UA 23, Fox Valley Area Labor Council, LIUNA 942, IUOE 66, Iron Workers Local Union 86, IBB, LIUNA 894, Fairbanks CLC, IBT 186, SMART, LIUNA 942, UA 23, Iron Workers 7, IBEW 611, UA 23, IBEW 56, UA 23, UA 23, IBEW 158, SMART 91, Western Mass Area Labor Federation, IBT, IBT 190, Montana AFL-CIO, AFA-CWA, WV State Building Trades and the ACT Foundation.

LaborLab

LaborLab's work has been cited by the U.S. Senate, The Economic Policy Institute, and featured in numerous publications and networks including:

